

Technical Data Sheet

Product Name: 50W LED FLOOD LIGHT(NEW)

Part Number: HLSWFE-50LG

Spec NO. : VER 1.1

Date : 2012.11.20



Our Products are
CE Certified



Features:

High luminous flux.

High efficiency.

Long life.

Wide Input voltage: AC 100~240V 50/60Hz Available for all colors.

Energy saving.

Diffused cover.

The product itself will remain within RoHS compliant Version.

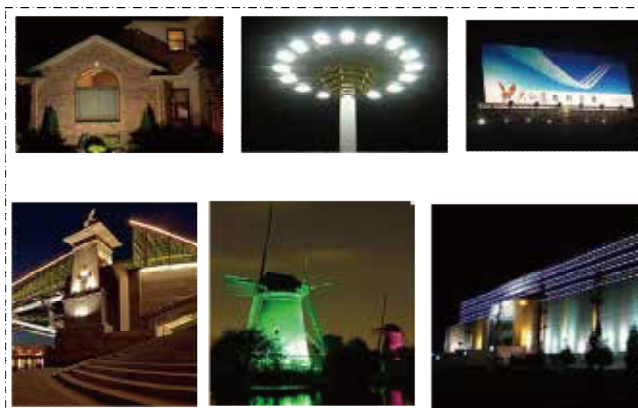
Applications:

Building outdoor wall Lighting

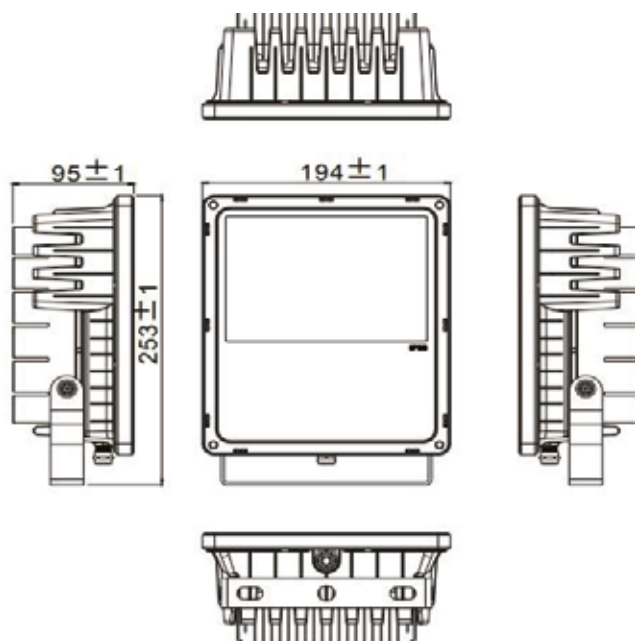
Outdoor Billboard Lighting

Palaestra Lighting

Square Lighting



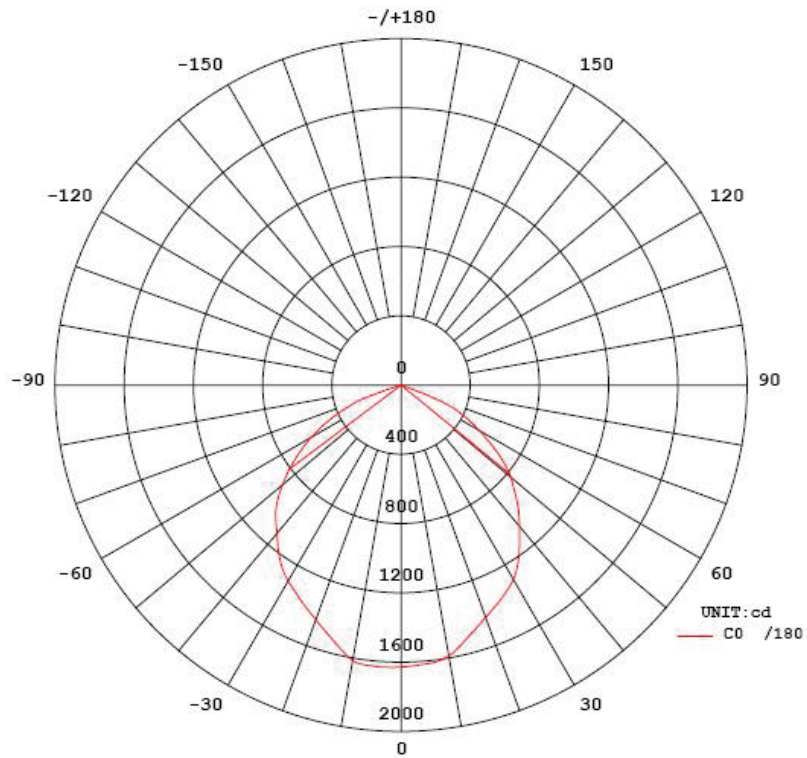
Dimensions and Schematic Diagram(unit: mm)



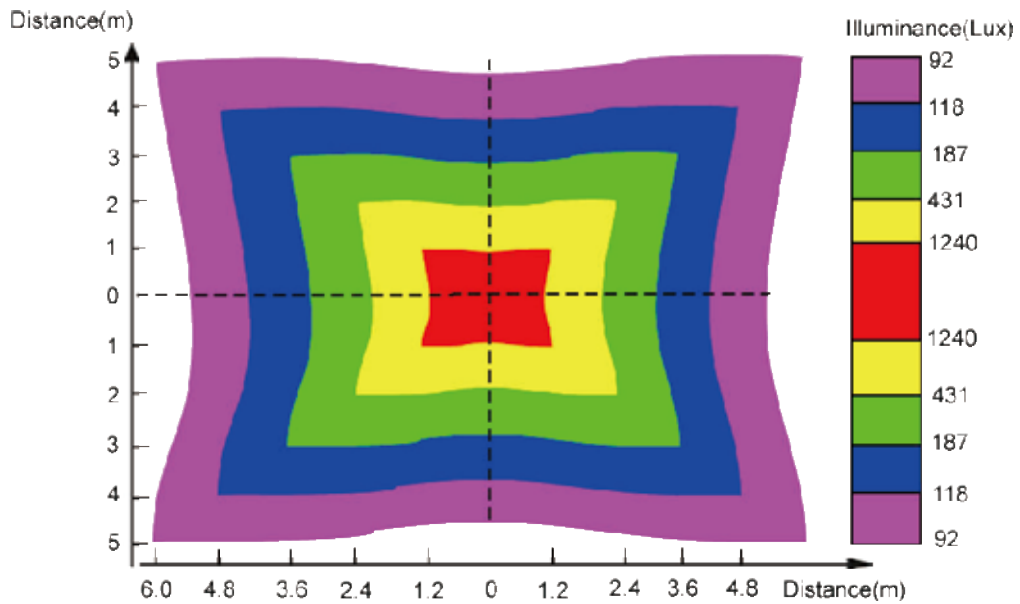
Electrical/Optical Characteristics at TA=25°C

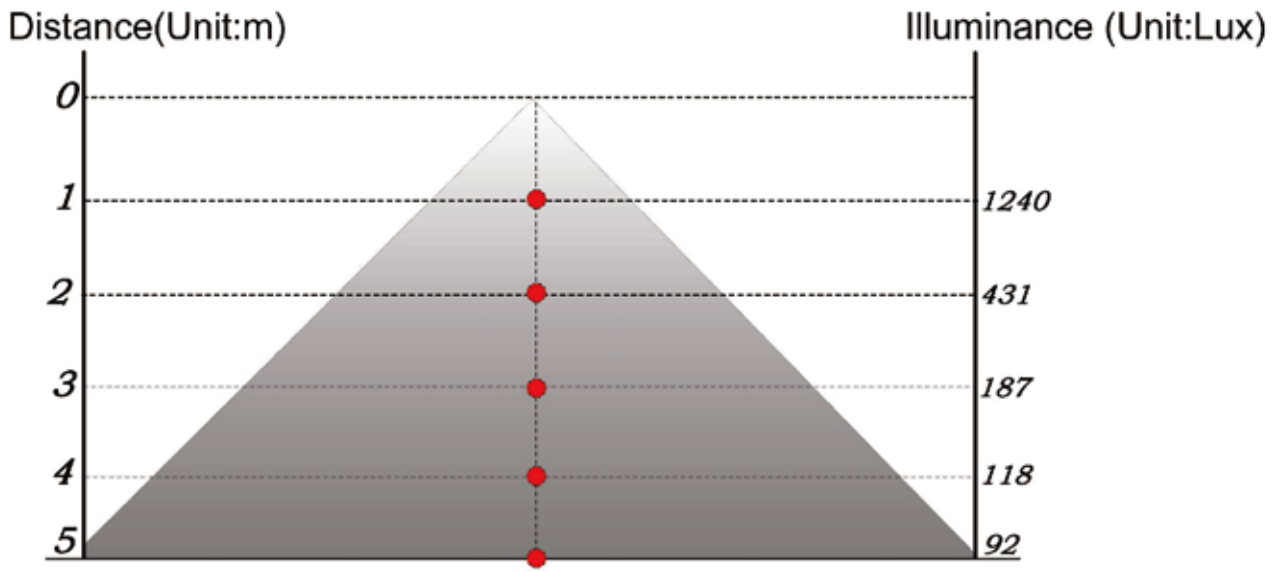
Items		Min	Typ	Max	Units
Input voltage(AC)		100	220	240	V
Operating Frequency		47	50/60	60	Hz
Power Dissipation		50	52	55	W
Color Temperature	Warm white	3000	--	3500	K
	Pure white	5000	--	5500	
	Cool white	7000	--	7500	
Luminous Flux		--	4450	--	LM
Luminosity(2m)			460		Lux
Viewing Angle		--	120	--	Deg
IP CODE		IP65			--
IK CODE		IK03			--
LUMINALRES CLASS		Class I			--
Operating Temperature		-25	--	55	°C
Storage humidity		10		80	%
Storage Temperature		-40	25	80	°C
Net Weight		--	2300	--	g

Luminous Intensity Light Distribution Diagram



Lumination Intensity Chart





NOTE: ● Indicates testpoint

Safety Notice For Using

Before starting use of the light, please check if the light was damaged during transportation. If any damage shown, please do not install or use it.

Any maintenance should be performed by trained professionals only.

Keep packaging material away from the reach of children and pets. Risk of suffocation!

Caution: the packaging contains small parts that may be swallowed by children.

Never leave children unattended in the vicinity of the lights and do not allow them to play with electrical devices.

Try to avoid looking directly in the LEDbeam-especially for extended periods of time. Do not shine the LED light in another person's eyes.

Never cover the lights by other objects.

Never allow the light to come into contact with open flames or external heat sources.

The products need to re-repair inspection or special treatment of tetirement after service time.

Maintenance

Prior to cleaning the light,make sure it has been disconnected form the power supply.

Use arty or slightly moistened cloth for cleaning.

Never use any chemicals or abrasives for cleaning.

Disposal

Used electronic devices must be collected for recycling and cannot be deposited together with daily garbage.

Installation


This product should be installed by trained electricians.

Check integrity of the productst when unpack the packing.

The distance between the light and any flammable materials must not be less than 0.3m.

The main cable must not connect with the low voltage cable.

When laying the cables, make sure that the cables and plugs are not subjected to any tensile or twisting forces. Fit the cable tension relieving mechanisms to the connection points of the surfac-emounted lights. Do not kink cables. Output cables should be laid separately and at a distance from other cables.

Proceed by connecting the wiring cables to the luminaries. Usually, the BROWN (or RED) wire is the Live wire (marked'L'),the BLUE wire is the Naughty wire (marked 'N'), The YELLOW (or GREEN) wire is the Earth (marked EARTH or ).

NOTE:

Please watch



Do not watch the light source directly with your eyes!



Please connect to Earth



High voltage, please caution to prevent electric shock!

Non-professionals are not allowed to disassemble and maintain the products. We have the right not to provide after-sales service if unauthorized disassembly and maintenance happens to the products.